



Black River Stages Rally

BULLETIN #2 –HQ map and Camp options

Most of the key locations for this rally are located in one place. This is at the Harrisville Rod and Gun Club property and the adjoining KD's Outskirtz Saloon restaurant.

13260 Bryant Bridge Rd, Harrisville, NY 13648

Key locations are laid out in the OnX map. With a free OnX plan you can view the folder and download one map for offline use. Make sure you set it up while you have service. The OnX share link is on Sportity and accessible in the "compete" section of blackriverstages.com.

See the map below for HQ layout.

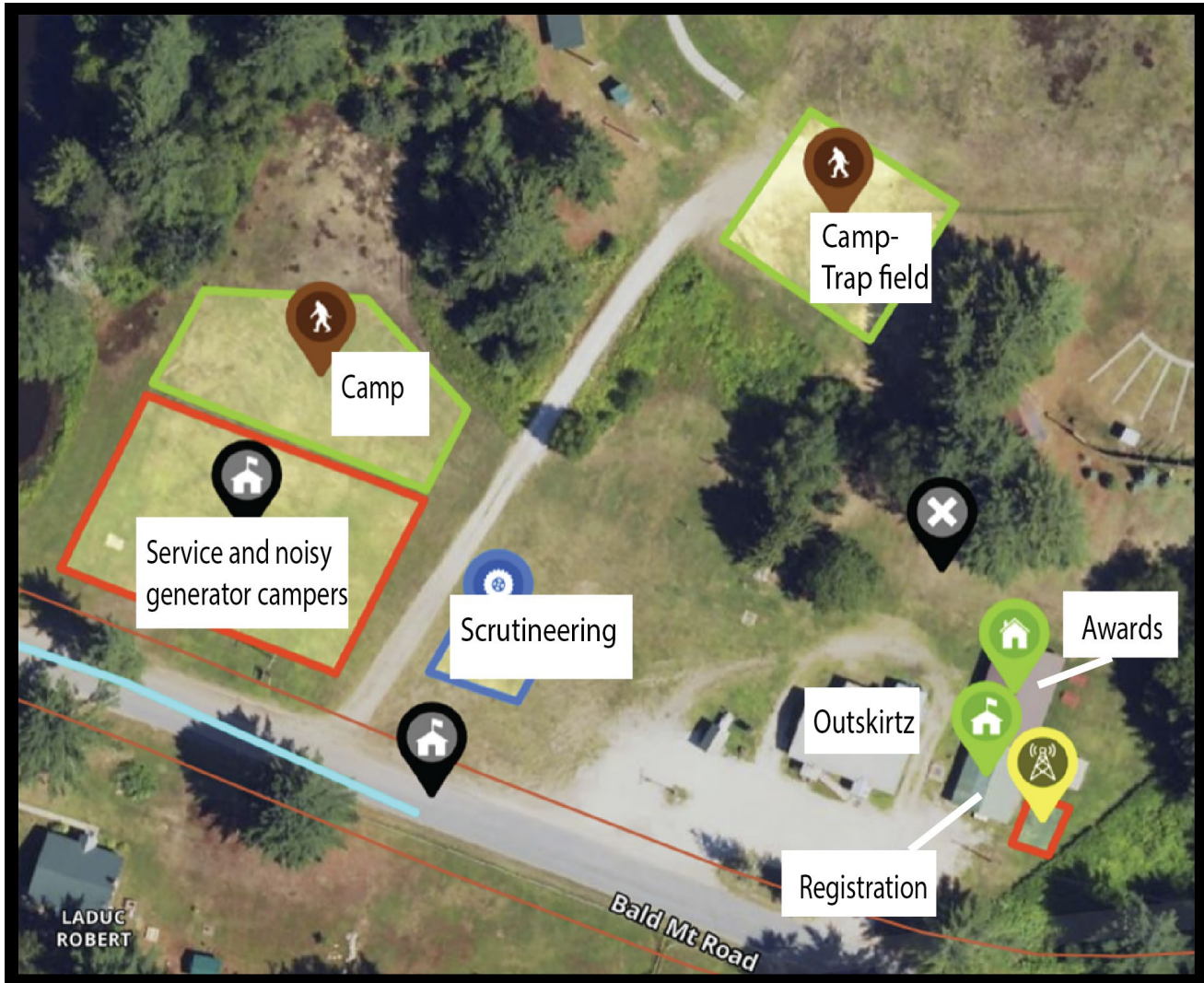
Camping

If you want a **real camp spot**, we have partnered with the Natural Bridge / Watertown, NY KOA Journey. If you call their office and give the code "black river" they will give you a 15% discount on up to 4 nights. They have a nice campground with a lot of big pull through spots and hookups. Plus a pool for the crew. Their address is:

6081 State Rte 3, Natural Bridge, NY 13665

And phone (315) 644-4098.

If you prefer primitive camp, we have permission to camp in the fields on the property. You can show up Wednesday and leave Sunday. It is **primitive camping** but there are porta-johns, one up on the hill (trap field) and one near the restaurant. If you want to camp in your service spot that is fine, and if you plan to run a generator all night please camp on or closer to the service area. Let's keep the front row or two against the road in the service area looking like service spots so that spectators see a racing event when they roll up instead of a campground. Other than that we don't care where you camp exactly, just keep it orderly and presentable. Suggested areas are marked. Your NRS director may do spot checks on the quality of smores, coffee, and anything that grew up in a barn.



If you have any questions reach out to perry@nasarallysport.com